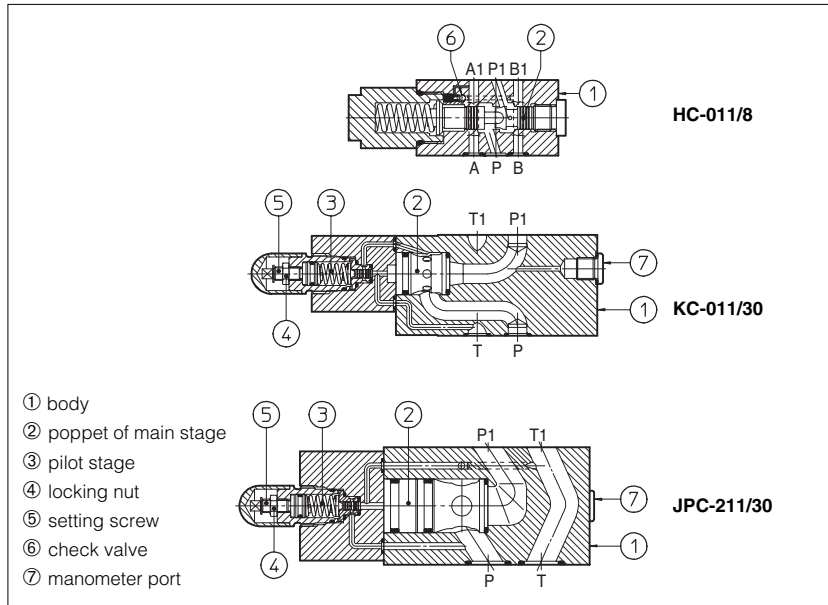


Modular pressure compensators type **HC, KC, and JPC-2**

ISO 4401 sizes 06, 10 and 16



HC, KC and JPC are two way pressure compensators for modular assembling with on/off and proportional directional control valves.

They keep a constant differential pressure (Δp) across port P and port A or B in order to maintain a constant flow rate against pressure variations. Automatic piloting selection ④ is included.

Fixed Δp is available only for size 06. Adjustment of desired Δp is operated by loosening the locking nut ④ and turning the setting screw ⑤ of pilot device. Clockwise rotation increases Δp .

HC = ISO 4401 size 06 interface: flow up to 50 l/min.

KC = ISO 4401 size 10 interface: flow up to 100 l/min.

JPC = ISO 4401 size 16 interface: flow up to 200 l/min.

Max inlet pressure up to 350 bar.

Valves are designed to operate in hydraulic systems with hydraulic mineral oil or synthetic fluid having similar lubricating characteristics.

1 MODEL CODE

HC-0 - **11** / **30** / **M** ** / *

Modular pressure compensator, size:
HC-0 = 06
KC-0 = 10
JPC-2 = 16

Configuration, see section 2
11 = two way execution with constant Δp between P port and user port

Fixed Δp (only for size 06):
8 = 8 bar

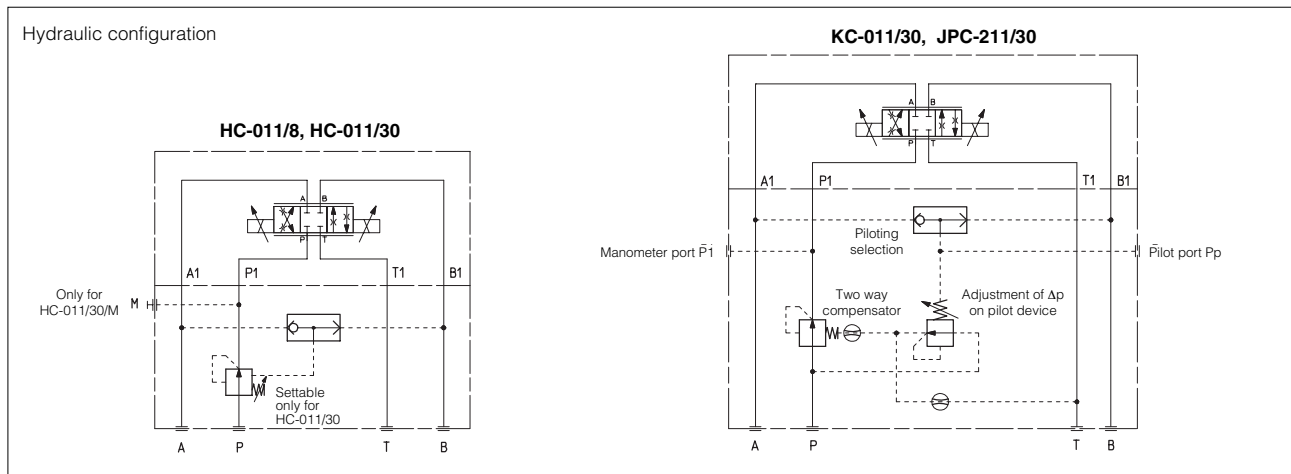
Adjustable Δp (for all sizes):
30 = 5 - 35 bar

Synthetic fluids:
WG = water-glycol
PE = phosphate ester

Design number

Option (only for HC-011/30)
/M = fit for manometer port P1

2 HYDRAULIC CHARACTERISTICS



| Valve model | HC-011/8 | HC-011/30 | KC-011/30 | JPC-211/30 |
|---------------------------------|----------|-----------|-----------|------------|
| Max flow [l/min] | | 50 | 100 | 200 |
| Max inlet pressure [bar] | | 350 | | |
| Regulating Δp (1) [bar] | 8 | 5 - 35 | 5 - 35 | |

(1) The Δp for single flow path is fixed at 8 bar or is adjustable between 5 and 35 bar; it corresponds to values of total Δp across the valve of 16 bar or between 10 and 70 bar. Threaded plugged ports Pp and P1 are suitable for pressure adjustment or check of Δp value for single flow path (reading difference between Pp and P1 values).

3 MAIN CHARACTERISTICS OF PRESSURE COMPENSATORS TYPE HC, KC, JPC

| | |
|----------------------------|--|
| Assembly position | Any position |
| Subplate surface finishing | Roughness index $\sqrt{0,4}$, flatness ratio 0,01/100 (ISO 1101) |
| Ambient temperature | -20°C to + 70° |
| Fluid | Hydraulic oil as per DIN 51524...535, for other fluids see section I |
| Recommended viscosity | 15 ÷ 100 mm ² /s at 40°C (ISO VG 15 ÷ 100) |
| Fluid contamination class | ISO 19/16, achieved with in line filters at 25 µm value and β ₂₅ ≥ 75 (recommended) |
| Fluid temperature | -20°C +60°C (standard and /WG seals) -20°C +80°C (/PE seals) |

4 INSTALLATION DIMENSIONS [mm]

HC-011/8

Mass: 1,9 Kg

HC-011/30

Mass: 2 Kg

Mounting surface ISO 4401-AB-03-4 size 06
 Diameter of ports A, B, P, T: Ø = 7,5 mm (max)
 Seals: 4 OR 108

Fastening bolts: n°4 socket head screws M5.
 The length depends on number and type of modular elements associated.

KC

Mass: 4,2 Kg

Mounting surface ISO 4401-AC-05-4 size 10
 Diameter of ports A, B, P, T: Ø = 11,2 mm (max)
 Seals: 2 OR 108, 5 OR 2050

Fastening bolts: n°4 socket head screws M6.
 The length depends on number and type of modular elements associated.

JPC

Mass: 6 Kg

Mounting surface ISO 4401-AE-08-4 size 16
 Diameter of ports A, B, P, T: Ø = 20 mm
 Diameter of ports X, Y: Ø = 7 mm
 Seals: 4 OR 130; 2 OR 109/70

Fastening bolts: n°4 socket head screws M10 and n°2 M6.
 The length depends on number and type of modular elements associated.