

3 MAIN CHARACTERISTICS OF FLOW CONTROL UNITS TYPE DHQ AND DKQ

Assembly position / location	Any position
Subplate surface finishing	Roughness index $\sqrt{0.4}$, flatness ratio 0,01/100 (ISO 1101)
Ambient temperature	-20°C to +70°
Fluid	Hydraulic oil as per DIN 51524 ... 535; for other fluids see section I
Recommended viscosity	15 ÷ 100 mm ² /s at 40°C (ISO VG 15 ÷ 100)
Fluid contamination class	ISO 19/16, achieved with in line filters at 25 µm value and $\beta_{25} \geq 75$ (recommended)
Fluid temperature	-20°C +60°C (standard and /WG seals) -20°C +80°C (/PE seals)

4 ELECTRIC/ELECTRONIC CONNECTORS AND ELECTRIC FEATURES

For electric/electronic connectors (to be ordered separately) and electric features of DHQ units, see tab. E010.
For electric/electronic connectors (to be ordered separately) and electric features of DKQ units, see tab. E020.

5 OPERATING LIMITS

DHQ

A = DHQ with OI or OU solenoid and E-SA or E-SE electronic connector

B = DHQ with OU solenoid and other connectors

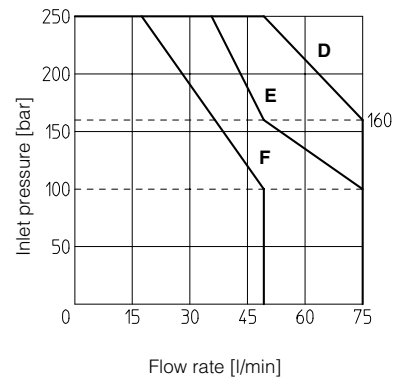
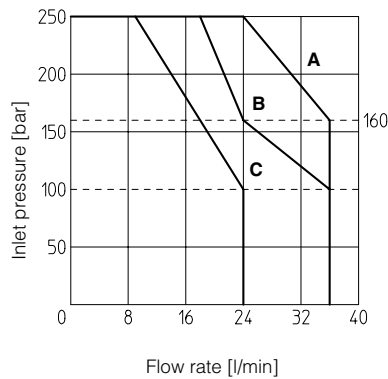
C = DHQ with OI solenoid and other connectors

DKQ

D = DKQ with AI or AU solenoid and E-SA or E-SE electronic connector

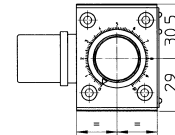
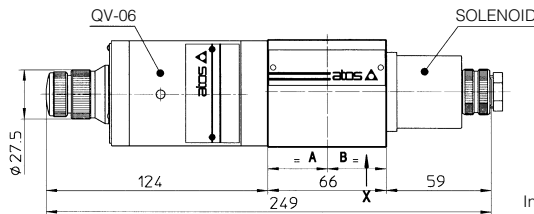
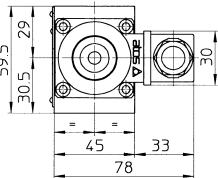
E = DKQ with AU solenoid and other connectors

F = DKQ with AI solenoid and other connectors



6 INSTALLATION DIMENSIONS [mm]

DHQ

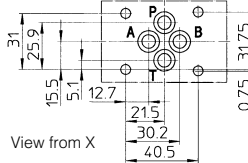


In versions -014 and -024 the position of valve QV-06 and of solenoid are inverted. Mass: 2,5 kg

Mounting surface

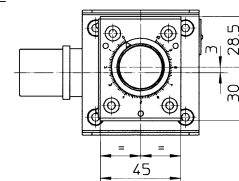
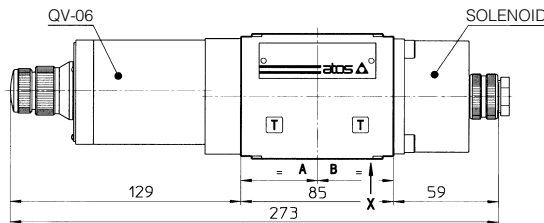
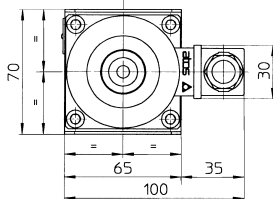
ISO 4401-AB-03-4 size 06

Diameter of ports P, A, B, T: $\varnothing = 7,5$ mm (max)
Seals: 4 OR 108



Fastening bolts: 4 socket head screws M5. The length depends on number and type of modular elements associated

DKQ

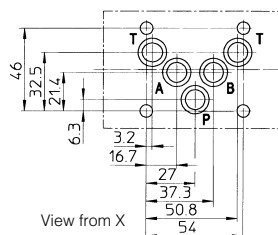


In versions -014 and -024 the position of valve QV-06 and of solenoid are inverted. Mass: 3 kg

Mounting surface

ISO 4401-AC-05-4 size 10

Diameter of ports P, A, B, T: $\varnothing = 11,2$ mm (max)
Seals: 5 OR 2050



Fastening bolts: 4 socket head screws M6. The length depends on number and type of modular elements associated