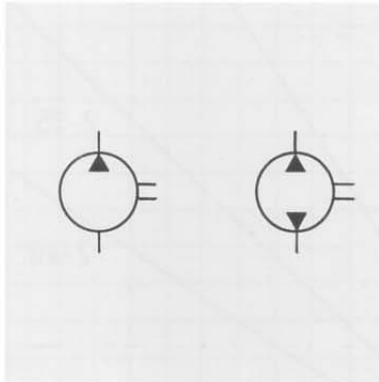


# POMPE AD INGRANAGGI GEAR PUMPS

**RONZIO**  
OLEODINAMICA

## PW2 - N

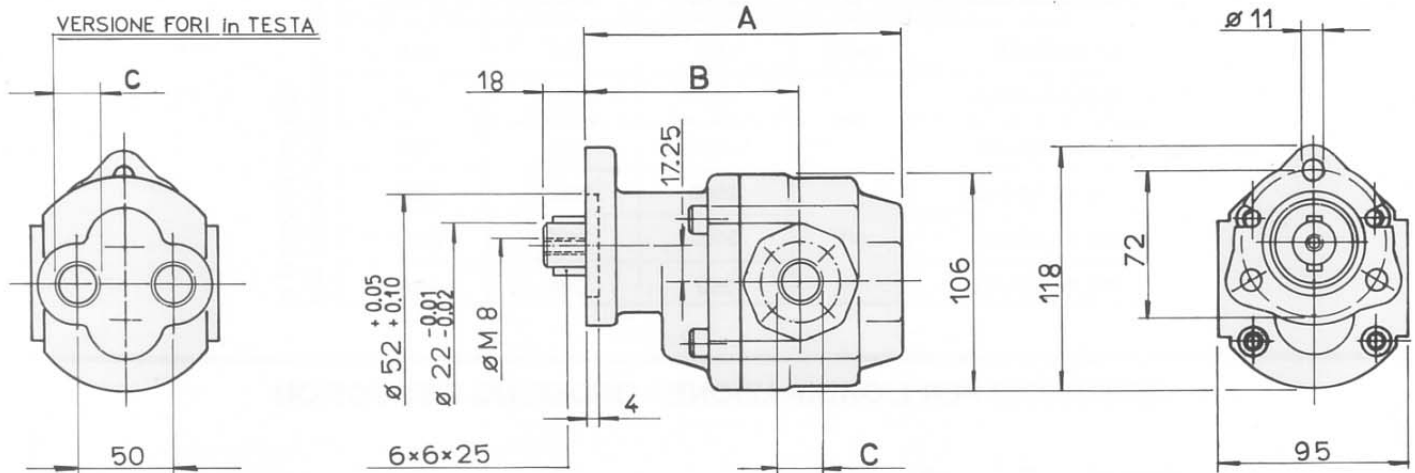


**POMPE SERIE W** - Pompe autocompensate con corpo in ghisa ad alta resistenza e dimensioni compatte adatte sia su impianti fissi che sul mobile.

**W SERIES PUMPS** - Gear pumps with high tensile strength cast iron body and pressure balanced plates are the right solution when high performances are required both in industrial plants and in machinery.



## DIMENSIONI D'INGOMBRO OVERALL DIMENSIONS



Tipo Type	Cilind. cm <sup>3</sup> /giro Capacity cm <sup>3</sup> /rev.	A	B	C		Peso Kg. Weight Kg.
				Aspirazione Inlet	Mandata Outlet	
PW2 - 15	15,5	145	112	3/4" G	3/4" G	5,4
PW2 - 25	26,1	160	115	3/4" G	3/4" G	6,1
PW2 - 40	38,8	178	117	3/4" G	3/4" G	6,8

Viscosità olio a 50° C  
Oil viscosity at 50° C

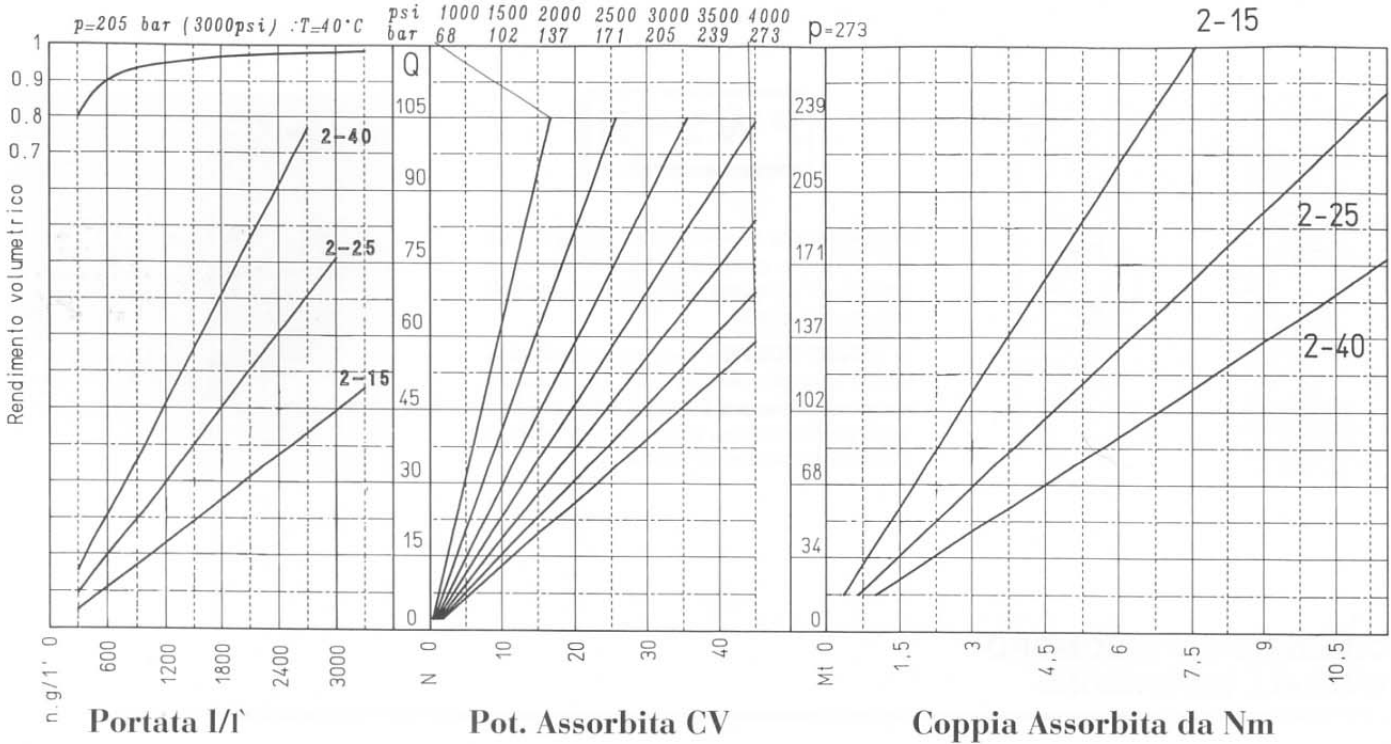
2,5 ÷ 6,5° E

Grado di filtraggio  
Oil Filtration

60 µ per pressioni sino a 105 bar - 40 µ per pressioni superiori  
60 µ for pressure up to 105 bar - 40 µ for pressure over

Temperatura olio  
Oil temperature

- 10 ÷ 80° C (10 ÷ 176° F)



		POMPA serie 'PW2 - N'		
Caratteristiche	U.	2-15	2-25	2-40
CILINDRATA	cm <sup>3</sup> /g	15.5	26.1	38.8
Press. continua	bar	300	220	160
Press. di punta		350	250	190
Vel. rot. continua	g/1'	2500	2000	1700
Vel. rot. di punta		3000	2400	2100
Vel. rot. minima		350	300	250

Per pompe reversibili diminuire la pressione del 15%

### ISTRUZIONI PER L'ORDINAZIONE - ORDERING INSTRUCTION

