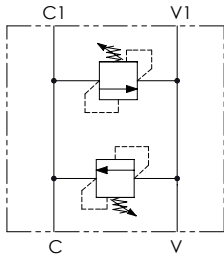




Hydraulic circuit



	01	02	03
<b>Ordering code</b>	<b>DCF</b>		

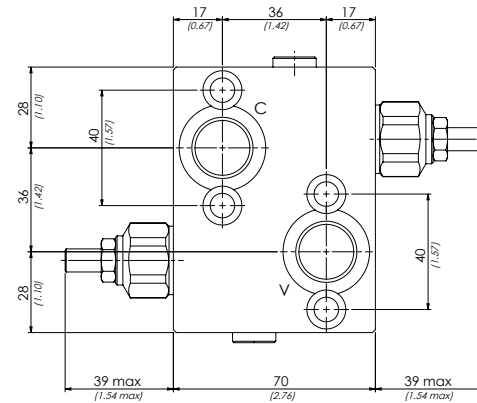
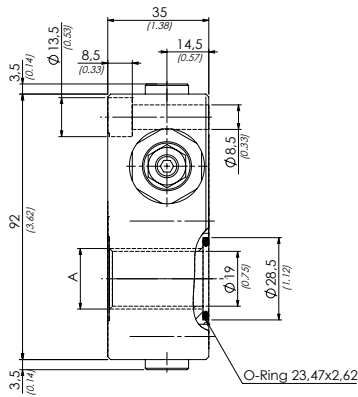
<b>01</b>	Double cross line direct acting relief valves	<b>DCF</b>	
<b>02</b>	Size	BSPP 1/2 <b>120</b>	
<b>03</b>	Spring <b>10/40 bar (145/580 PSI) max</b>	(Press. increase) <b>12 bar/al giro (174 PSI/turn)</b>	<b>1</b>
	Spring <b>20/210 bar (290/3045 PSI) max</b>	(Press. increase) <b>33 bar/al giro (479 PSI/turn)</b>	<b>2</b>
	Spring <b>70/350 bar (1015/5075 PSI) max</b>	(Press. increase) <b>70 bar/al giro (1015 PSI/turn)</b>	<b>3</b>

Technical characteristics

Type	A	Max flow l/min-USgpm	Max pressure bar/PSI	Approx weight kg/lb	Type of valve
<b>DCF120</b>	<b>BSPP 1/2</b>	<b>40 (10.6)</b>	<b>350 (5075)</b>	<b>1,5 (3.3)</b>	<b>VMD40S</b>

Technical data

Mineral oil	<b>ISO 6743/4 (DIN 51524)</b>
Oil viscosity	<b>15-250 mm<sup>2</sup>/s (15 to 250 cSt)</b>
Max contamination index with filter	<b>ISO 4406:1999 Classe 19/17/14</b>
Oil temperature	<b>-20°C +80°C</b> <b>-4°F + 176°F</b>
Ambient temperature	<b>-20°C +50°C</b> <b>-4°F + 122°F</b>
<i>It is necessary a filter use to protect the valve (advised filtration 15 µm)</i>	



mm  
(Inches)

Performances

