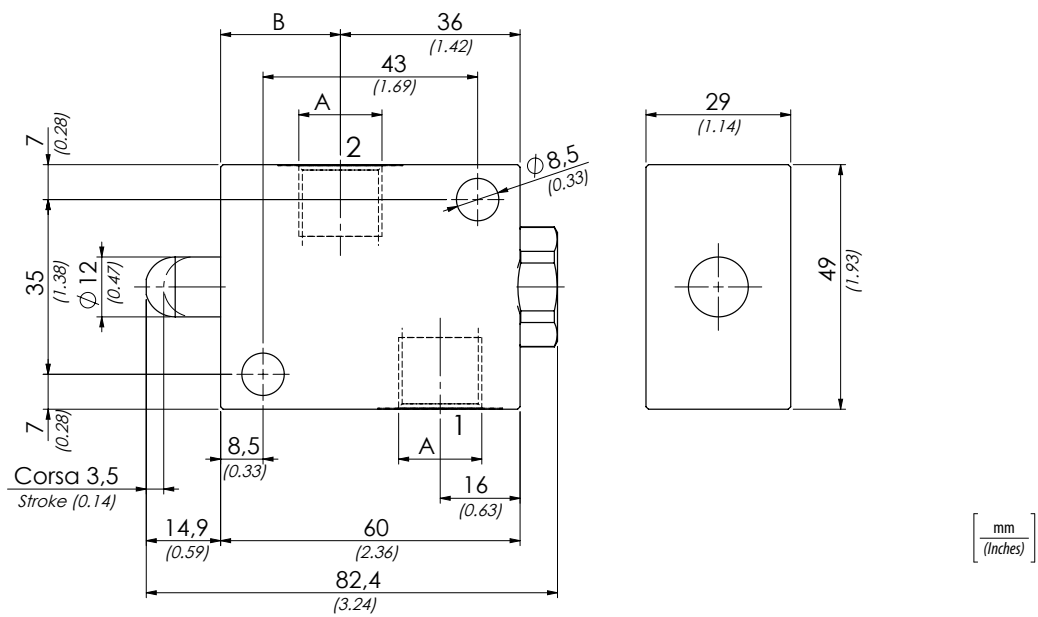
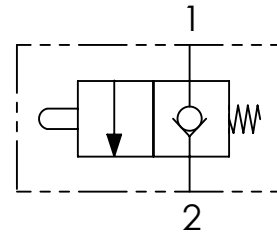
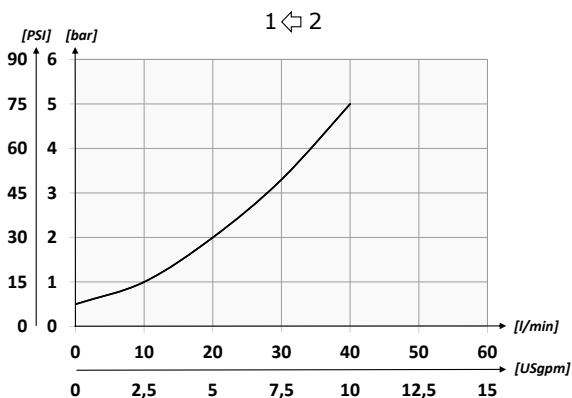


01		02	
Ordering code			
<b>FCM</b>			
<b>01</b>	Normally closed end - stroke valves		<b>FCM</b>
<b>02</b>	Size	BSPP 1/4	<b>140N</b>
		BSPP 3/8	<b>380N</b>

### Hydraulic circuit



### Performances



### Technical data

Mineral oil	<b>ISO 6743/4 (DIN 51524)</b>
Oil viscosity	<b>15-250 mm<sup>2</sup>/s (15 to 250 cSt)</b>
Max contamination index with filter	<b>ISO 4406:1999 Classe 19/17/14</b>
Oil temperature	<b>-20°C +80°C</b> <b>-4°F + 176°F</b>
Ambient temperature	<b>-20°C +50°C</b> <b>-4°F + 122°F</b>

It is necessary a filter use to protect the valve (advised filtration 15 µm)

### Technical characteristics

Type	A	B	Max flow l/min-USgpm	Max pressure (PSI)	Approx weight kg-lb
<b>FCM140N</b>	<b>BSPP 1/4</b>	<b>26,5 (1.04)</b>	<b>40 (10.6)</b>	<b>350 (5075)</b>	<b>0,53 (1.16)</b>
<b>FCM380N</b>	<b>BSPP 3/8</b>	<b>24 (0.94)</b>			<b>0,50 (1.10)</b>