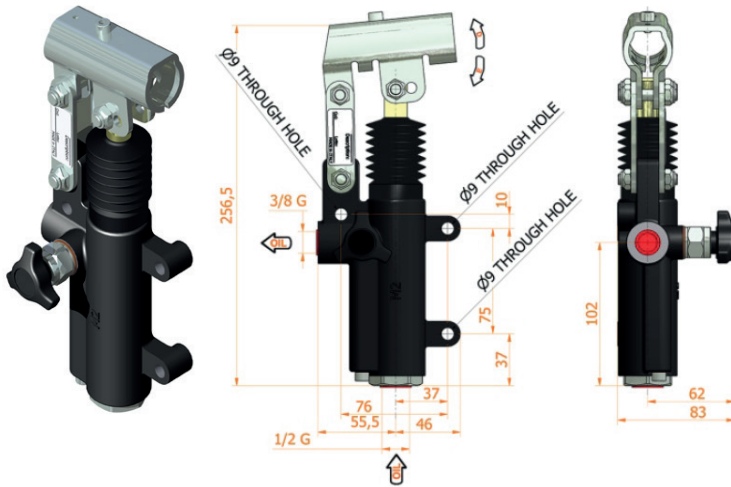
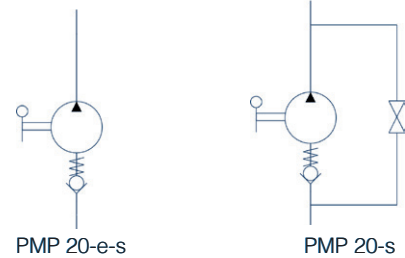


**PMP 20-E-S / PMP 20-S**



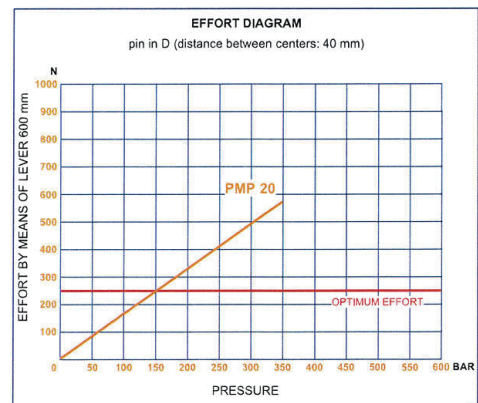
**SPECIFICATIONS:**

- Cast iron body
- Piston treated with Niploy
- White zinc plated support lever
- Lever connection Ø 27
- White zinc plated external parts
- Standard colour black

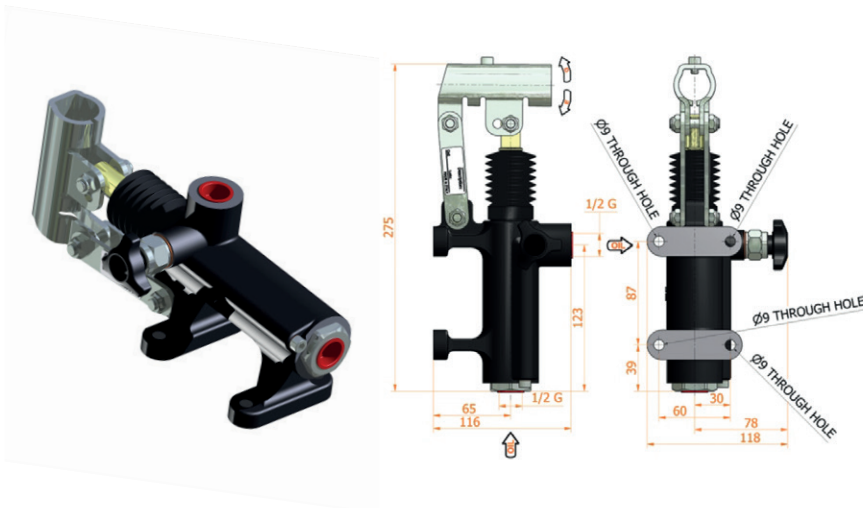


**Ordering Chart**

Part No.	Description	Release valve	Displacement (cc/stroke)	Max. pressure (bar)
PMP20-E-S	HAND PUMP 20CC/STROKE	NO	20	350
PMP20-S	HAND PUMP 20CC/STROKE+RELEASE VALVE	YES	20	350

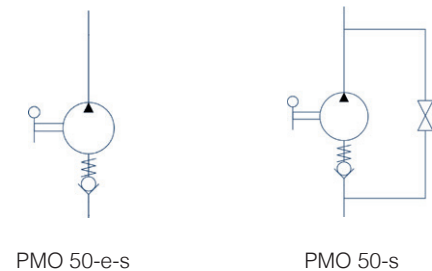


**PMO 50-E-S / PMO 50-S**



**SPECIFICATIONS:**

- Cast iron body
- Piston treated with Niploy
- White zinc plated support lever
- Lever connection Ø 27
- White zinc plated external parts
- Standard colour black



**Ordering Chart**

Part No.	Description	Release valve	Displacement (cc/stroke)	Max. pressure (bar)
PMO50-E-S	HAND PUMP 50CC/STROKE	NO	50	280
PMO50-S	HAND PUMP 50CC/STROKE+RELEASE VALVE	YES	50	280

