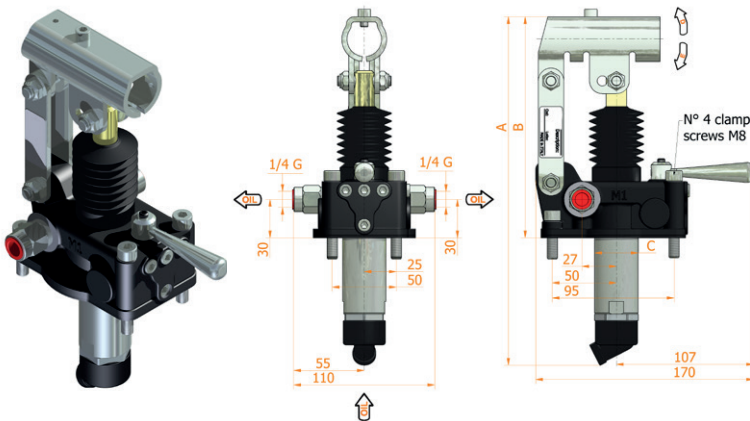


PMDVB 12 25 45

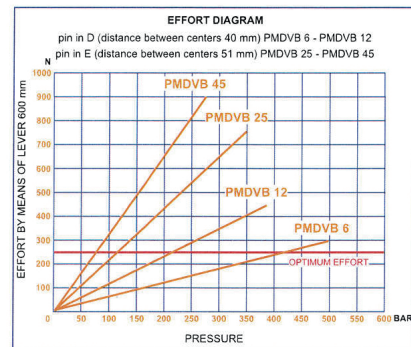
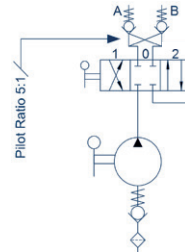


Ordering Chart

Part No.	Description	Displacement (cc/stroke)	Max. pressure (bar)
PMDVB12CC-S	HAND PUMP + DCV + PO CHECK 12CC/STROKE	12	380
PMDVB25CC-S	HAND PUMP + DCV + PO CHECK 25CC/STROKE	25	350
PMDVB45CC-S	HAND PUMP + DCV + PO CHECK 45CC/STROKE	45	280

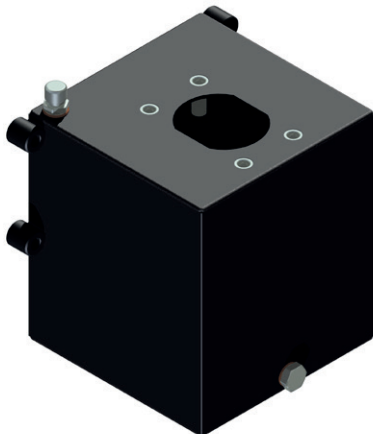
SPECIFICATIONS:

- Cast iron body
- Piston treated with Niploy
- White zinc plated support lever
- Lever connection Ø 27
- White zinc plated external parts
- Standard colour black
- Oil tank mounting kit included
- Directional control valve

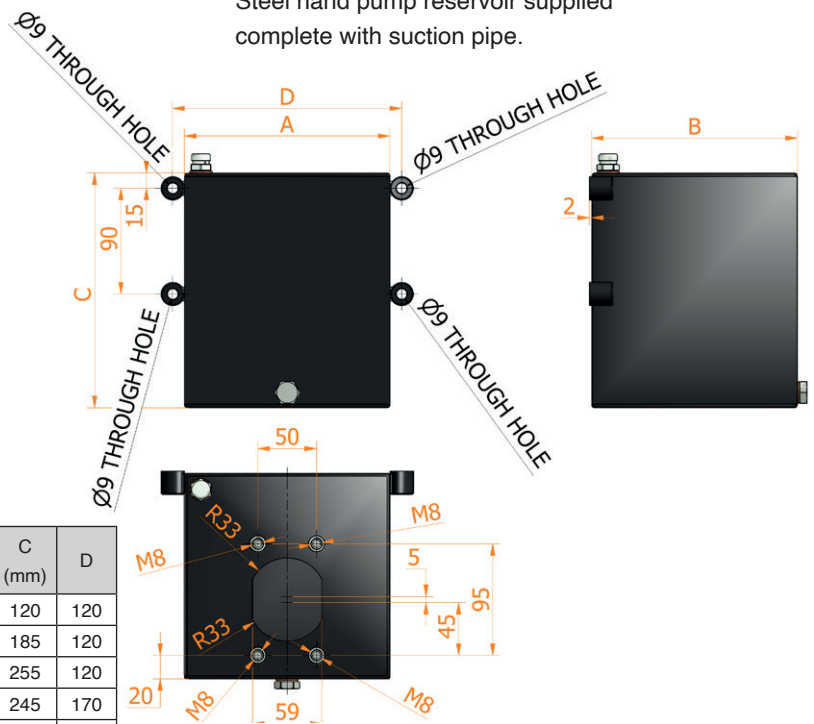


Dual pilot operated check valves, 5:1

HAND PUMP TANK (STEEL) WITH SUCTION PIPE & BREATHER



Steel hand pump reservoir supplied complete with suction pipe.



Ordering Chart

Part No.	Description	A (mm)	B (mm)	C (mm)	D (mm)
S1-AC-R	1 LITRE HAND PUMP RESERVOIR	100	150	120	120
S2-AC-R	2 LITRE HAND PUMP RESERVOIR	100	150	185	120
S3-AC-R	3 LITRE HAND PUMP RESERVOIR	100	150	255	120
S5-AC-R	5 LITRE HAND PUMP RESERVOIR	150	150	245	170
S7-AC-R	7 LITRE HAND PUMP RESERVOIR	150	150	340	170
S10-AC-R	10 LITRE HAND PUMP RESERVOIR	150	150	485	170

HAND PUMP HANDLE



Handle ordered separately

Part No.	Description
LPM27 X 600	HAND PUMP LEVER 600mm