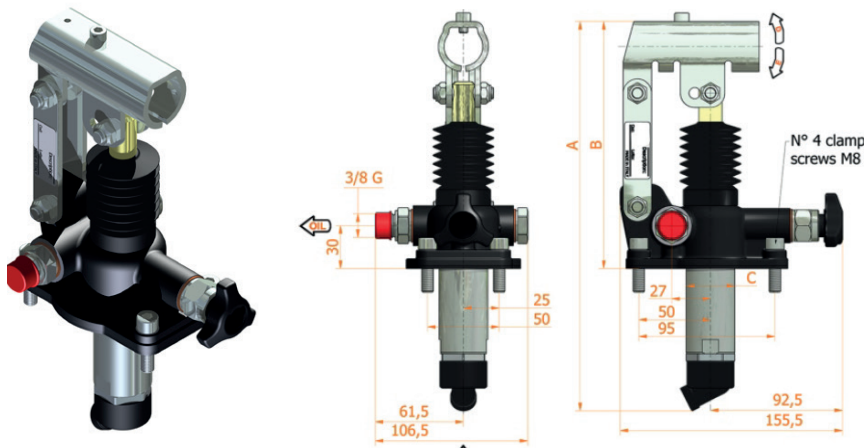


PM 12 25 45 S

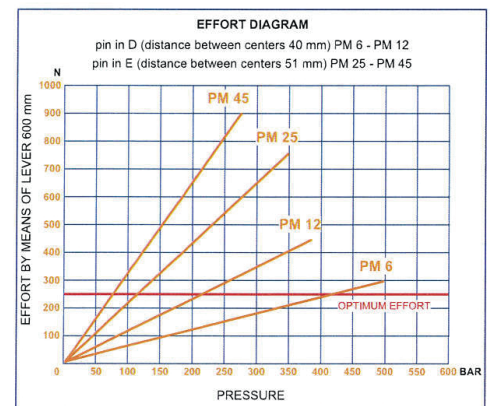
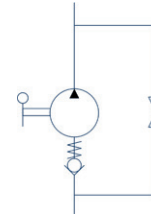


Ordering Chart

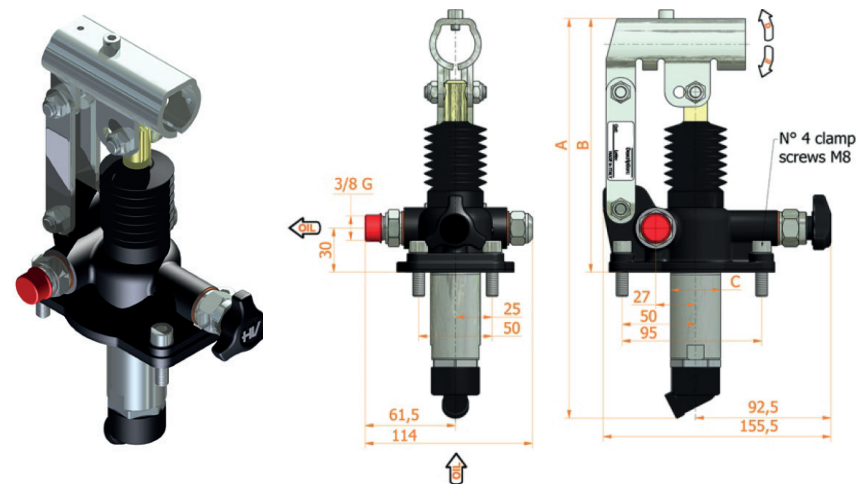
Part No.	Description	Release valve	Displacement (cc/stroke)	Max. pressure (bar)
PM12-S	HAND PUMP 12CC/STROKE+RELEASE VALVE	YES	12	380
PM25-S	HAND PUMP 25CC/STROKE+RELEASE VALVE	YES	25	350
PM45-S	HAND PUMP 45CC/STROKE+RELEASE VALVE	YES	45	280

SPECIFICATIONS:

- Cast iron body
- Piston treated with Niploy
- White zinc plated support lever
- Lever connection Ø 27
- White zinc plated external parts
- Standard colour black
- Oil tank mounting kit included



PM 12 25 45 byB-S



Ordering Chart

Part No.	Description	Release valve	Displacement (cc/stroke)	Max. pressure (bar)
PM12-BYB-S	HAND PUMP 12CC/STROKE+RELEASE+RELIEF VALVES	YES	12	380
PM25-BYB-S	HAND PUMP 25CC/STROKE+RELEASE+RELIEF VALVES	YES	25	350
PM45-BYB-S	HAND PUMP 45CC/STROKE+RELEASE+RELIEF VALVES	YES	45	280

SPECIFICATIONS:

- Cast iron body
- Piston treated with Niploy
- White zinc plated support lever
- Lever connection Ø 27
- White zinc plated external parts
- Standard colour black
- Oil tank mounting kit included
- Pressure relief valve standard setting: 100 bar

