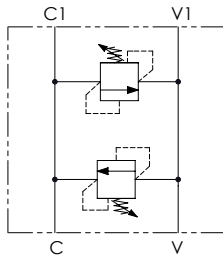
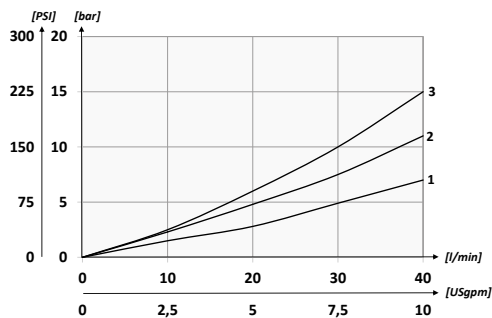
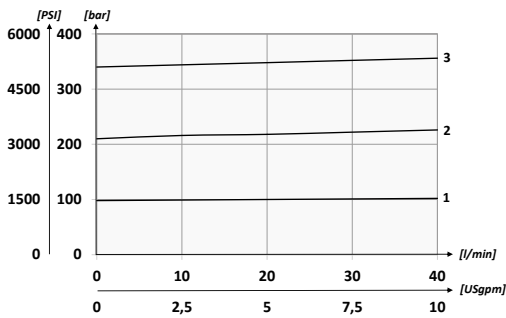


Hydraulic circuit



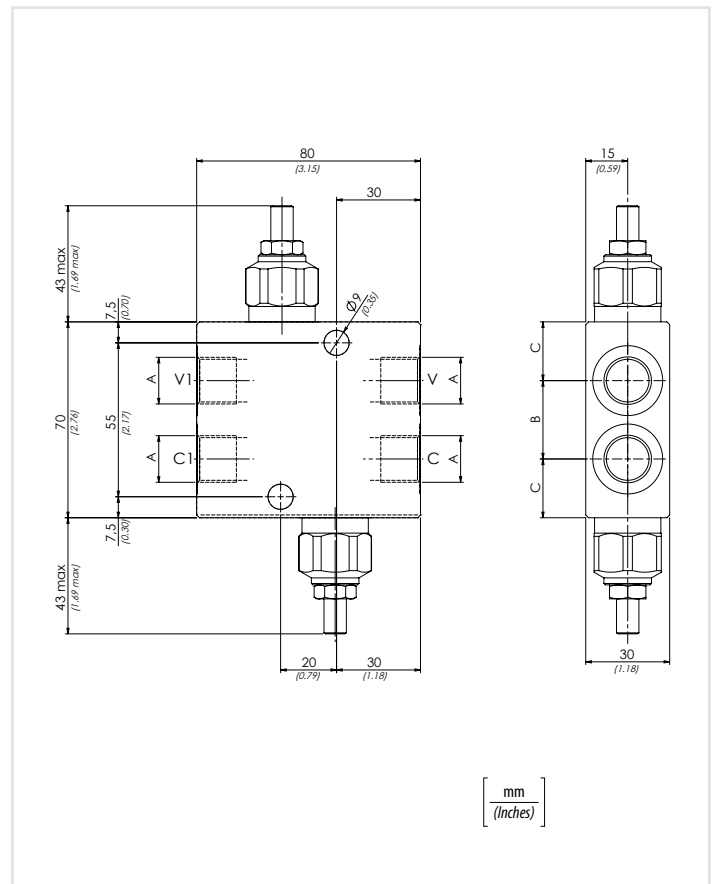
Performances



01	02	03
<b>VBDC</b>		

Ordering code

01	Double cross line direct acting relief valves		<b>VBDC</b>
02	Size	BSPP 3/8	<b>380</b>
		BSPP 1/2	<b>120</b>
03	Spring	Press. increase	
	<b>10/90 bar (145/1305 PSI) max</b>	<b>12 bar/al giro (174 PSI/turn)</b>	<b>1</b>
	<b>20/210 bar (290/3045 PSI) max</b>	<b>33 bar/al giro (479 PSI/turn)</b>	<b>2</b>
	Spring	Press. increase	
	<b>70/350 bar (1015/5075 PSI) max</b>	<b>70 bar/al giro (1015 PSI/turn)</b>	<b>3</b>



Technical data

Mineral oil	<b>ISO 6743/4 (DIN 51524)</b>		
Oil viscosity	<b>15-250 mm<sup>2</sup>/s (15 to 250 cSt)</b>		
Max contamination index with filter	<b>ISO 4406:1999 Classe 19/17/14</b>		
Oil temperature	<b>-20°C +80°C</b>	<b>-4°F + 176°F</b>	
Ambient temperature	<b>-20°C +50°C</b>	<b>-4°F + 122°F</b>	
It is necessary a filter use to protect the valve (advised filtration 15 µm)			

Technical characteristics

Type	A	Max flow l/min-USgpm	Max pressure bar/PSI	B	C	Approx weight kg/lb	Type of valve
<b>VBDC380</b>	<b>BSPP 3/8</b>			<b>28</b> (1.10)	<b>21</b> (0.83)	<b>1,18 (2.60)</b>	<b>VMD40S</b>
		<b>40 (10.6)</b>	<b>350 (5075)</b>				
<b>VBDC120</b>	<b>BSPP 1/2</b>			<b>33</b> (1.30)	<b>18,5</b> (0.73)	<b>1,12 (2.47)</b>	